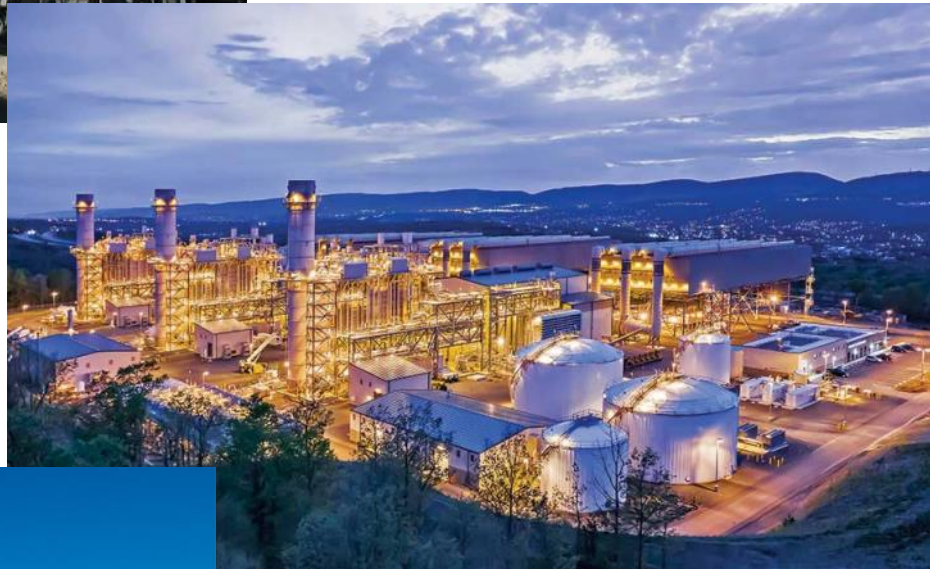




EDH-IMS

Medium voltage switchgear, Air Insulated
Up to 24kV



Application: Power supply system

- Power supply companies

Application: Industry

- | | |
|------------------------|--------------------------|
| ■ Power stations | ■ Chemical industry |
| ■ Cement industry | ■ Petroleum industry |
| ■ Automobile industry | ■ Pipeline installations |
| ■ Iron and steel works | ■ Offshore installations |
| ■ Rolling mills | ■ Electrochemical plants |
| ■ Mining industry | ■ Petrochemical plants |
| | ■ Shipbuilding industry |
| | ■ Diesel power plants |
| | ■ Emergency power supply |

EDH-IMS

Description

EDH-IMS is medium voltage switchgear with a metal enclosure, suitable for indoor installations. Metal partitions segregate the compartments from each other and the live parts are air-insulated

Apparatus

The range of apparatus available for EDH-IMS including:

- Withdrawable vacuum circuit-breakers with mechanical or magnetic actuator
- Withdrawable vacuum contactors with fuses
- Fixed version of switch-disconnectors

Busbar configuration

Single busbar

Degrees of protection

The degrees of protection of the switchgear conform with IEC 60529 Standards. Empower MS switchgear is normally supplied with

- IP4X for the enclosure
- IP2X for compartment partitions

Standards

The switchgear and main apparatus contained in it follow Standards:

- IEC 62271-1 for general purposes
- IEC 62271-200 for the switchgear
- IEC 62271-102 for the earthing switch
- IEC 62271-100 for the circuit-breakers
- IEC 60071-2 for the insulation coordination
- IEC 62271-106 for the contactors
- IEC 60265-1 for the switch-disconnectors
- IEC 60529 for degree of protections

Classification

Internal arc IAC AFLR

Partition class: PM (metallic partition)

Loss of service continuity category: LSC 2B

Colour of external surface

RAL7035—ligh grey (front door, side sheets)

Other colour on request

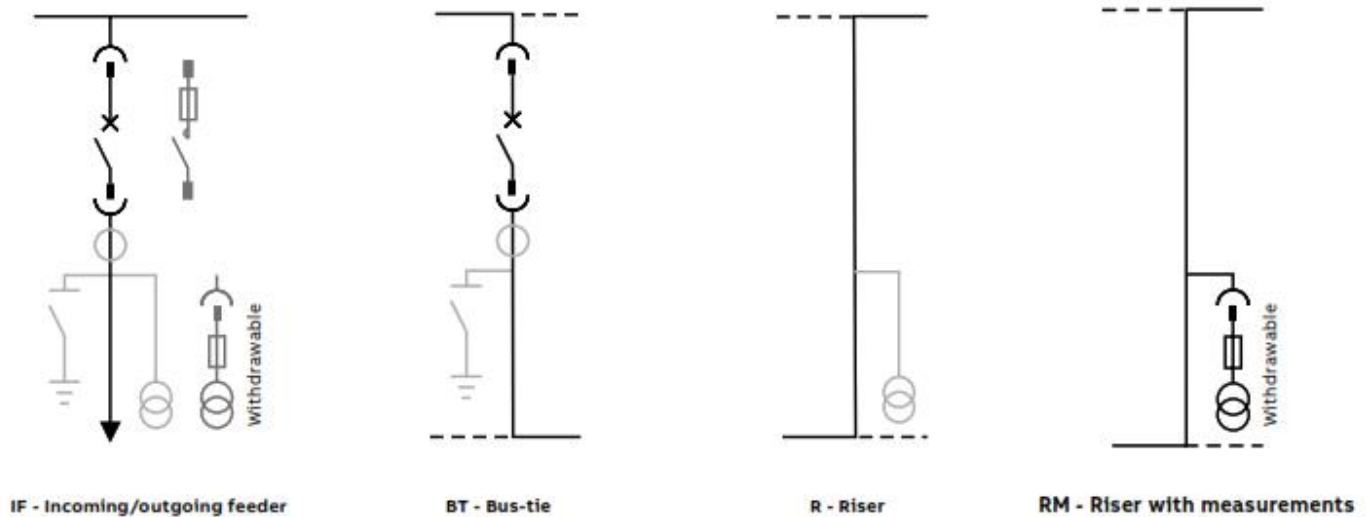
Electrical characteristics

Rated voltage	[kV]	7.2	12	17.5	24
Rated insulation voltage	[kV]	7.2	12	17.5	24
Rated power frequency withstand voltage	[kV/ 1min]	20	28	38	50
Rated lightning impulse withstand voltage	[kV]	60	75	95	125
Rated frequency	[Hz]	50/ 60	50/ 60	50/ 60	50/ 60
Rated short time withstand current	[kA/ 3s]	...40	40	40	25
Peak current	[kA]	100/104	100/104	100/104	63
Internal arc withstand current	[kA/ 1s]	40	40	40	25
Main busbar rated current	[A]	3600	3600	3600	2500
Circuit-breaker rated current	[A]	3150	3150	3150	2500
Circuit-breaker rated current with forced ventilation	[A]	3600	3600	3600	2500

EDH-IMS

Single line diagram

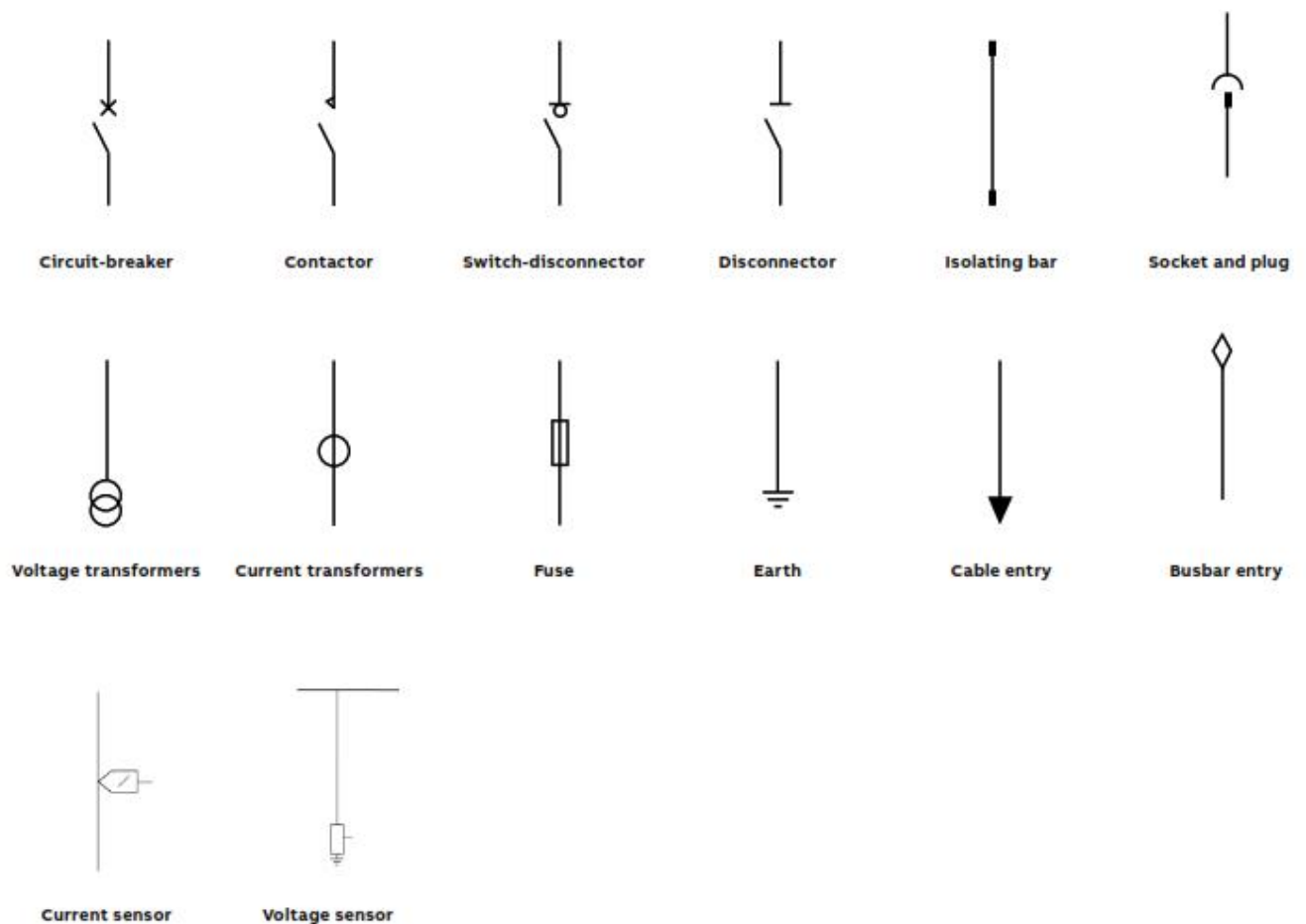
Single-line diagram of typical units

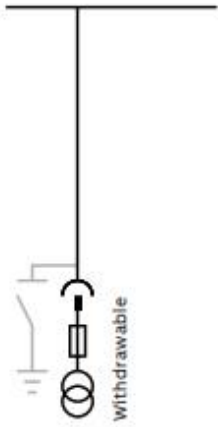


Key to components

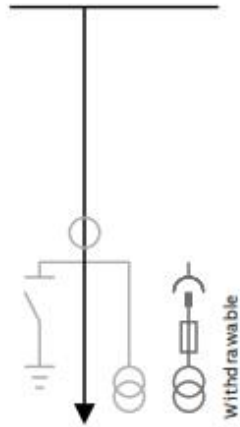
— Standard components — Accessories — Alternative solutions

Graphical symbols

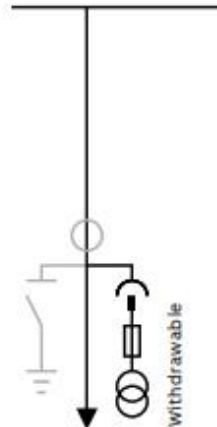




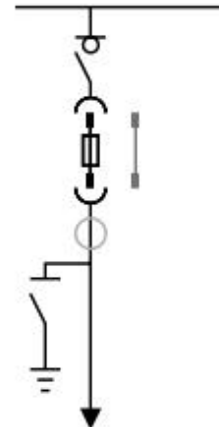
M - Measurements



IFD - Direct incoming/outgoing feeder

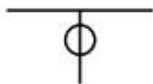


IFDM - Direct incoming/ outgoing feeder with measurements



DF - Switch-disconnector unit

Single-line diagram of the busbar applications



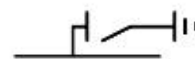
Current transformers



Voltage transformers



Duct entry



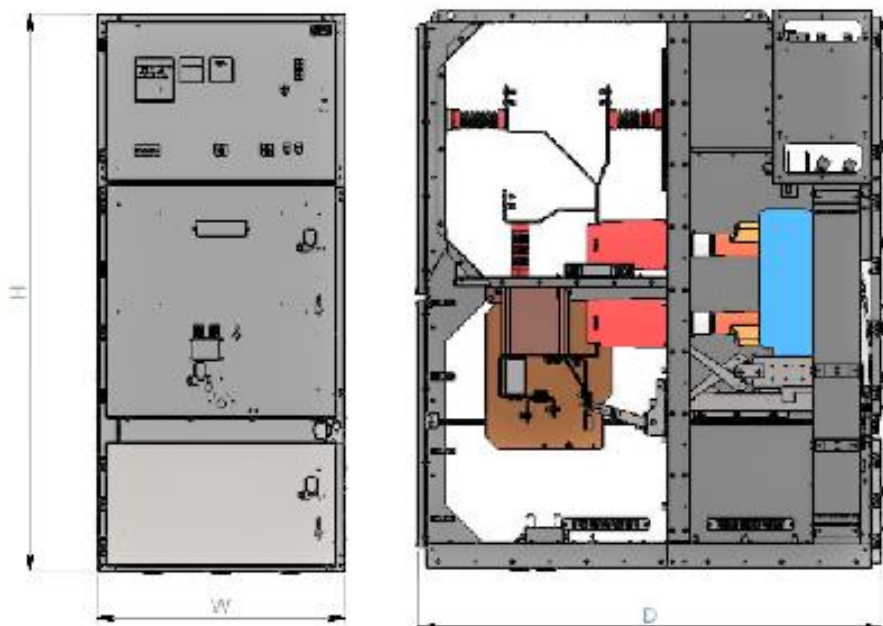
Earthing switch

EDH-IMS

Technical data

12-17.5kV															
Width [mm]		650		800		1000									
Height [mm]		2250		2250		2250									
Depth [mm]		1600		1600		1600									
Rated current [A]		630	1250	630	1250	1600	2000	2500	3150	3600	1600	2000	2500	3150	3600
IF	Incoming/ Outgoing	x	x		x	x	x	x			x	x	x	x	x
BT	Bus-tie		x		x	x	x	x						x	x
R	Riser		x			x	x	x	x	x					
RM	Riser with measurements		x			x	x	x	x	x					
M	Measurements	x													
IFD	Direct incoming/ outgoing		x					x							
IFDM	Direct incoming/ outgoing														
	with measurement		x					x							
DF	Switch-disconnector unit				x										
IFC	Contactor panel	x													

24kV											
Width [mm]		800					1000				
Height [mm]		2250					2250				
Depth [mm]		1800					1800				
Rated current [A]		630	1250	1600	2000	2500	630	1250	1600	2000	2500
IF	Incoming/ Outgoing	x	x				x	x	x	x	x
BT	Bus-tie		x					x	x	x	x
R	Riser		x	x	x	x		x	x	x	x
RM	Riser with measurements		x	x	x	x					
M	Measurements	x									
IFD	Direct incoming/ outgoing		x	x	x	x					x
IFDM	Direct incoming/ outgoing										
	with measurement		x	x	x	x					x



Benefit



Highest safety level for people and equipment



High customization and adaptation level while integrating into existing or new installation



Solution with consideration of environmental impacts while designing



Sản phẩm của EDH trên bản đồ Việt Nam



Hoàng Sa (Việt Nam)

Trường Sa (Việt Nam)



CÔNG TY CỔ PHẦN PHÁT TRIỂN KỸ THUẬT CÔNG NGHỆ EDH
EDH TECHNOLOGY DEVELOPMENT JOINT STOCK COMPANY

CÔNG TY CỔ PHẦN GIẢI PHÁP NĂNG LƯỢNG EDH
EDH POWER SOLUTION JOINT STOCK COMPANY

Địa chỉ : Lô số2 - CN3 - Cụm công nghiệp Ngọc Hồi - Xã Ngọc Hồi
Huyện Thanh Trì - Hà Nội - Việt Nam
Điện thoại : 84 - 4 37830057 / 37830058 / 37830064
Fax : 84 - 4 37830059
Email : edh@edh.com.vn
Website : www.edh.com.vn

Address : Lot 2 - CN3 - Ngoc Hoi Industrial Zone - Ngoc Hoi
Commune - Thanh Tri District - Hanoi - Vietnam
Phone : 84 - 4 37830057 / 37830058 / 37830064
Fax : 84 - 4 37830059
Email : edh@edh.com.vn
Website : www.edh.com.vn